

Isle of Wight Domestic Abuse Services

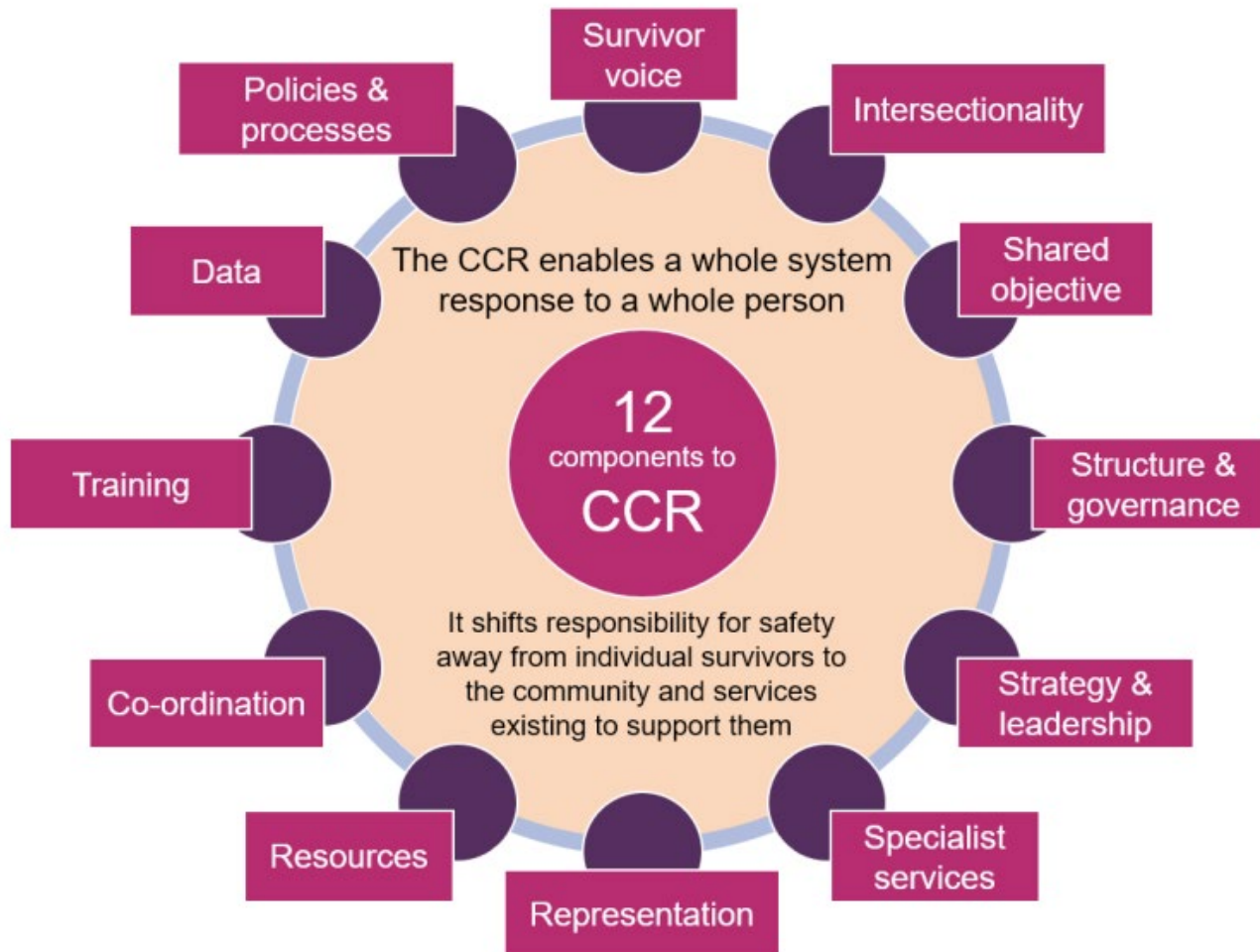
**Intervention Service for
those using Abuse
Behaviours**

“Domestic Abuse & Sexual Violence offences should be considered as seriously as knife crime and homicide”

HM Government, December 2021

The Tackling Domestic Abuse Plan

Tackling Violence Against Women and Girls Strategy



Coordinated Community Response Model

Direct link with commissioned services approach

The Isle of Wight Domestic Abuse Partnership Board



ISLE OF WIGHT
DOMESTIC ABUSE
PARTNERSHIP BOARD

Strategy Priorities

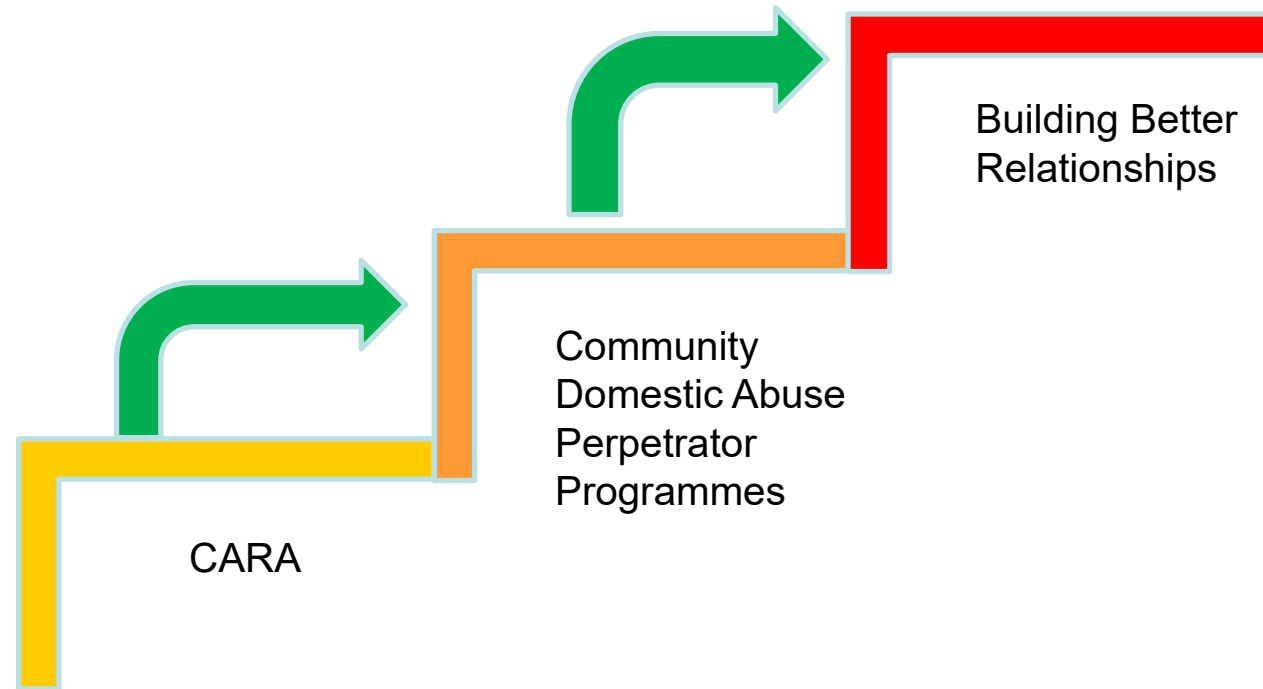
- Prevention & Reduction of Harm
- Increased Access to Specialist Support
- Collaboration & Working Together

Hampshire and Isle of Wight Constabulary

Training police receive to respond to Domestic Abuse

- SafeLives DA Matters training delivered to all frontline officers (now being rolled out to other roles)
- DA Matters training covers all aspects of DA, Coercive & Controlling Behaviour, children as victims, perpetrator behaviour, and suicide & DA, and non-fatal strangulation
- DASH RIC (Domestic Abuse Stalking Harassment Risk Indicator Checklist) delivered to all student officers

Community & Statutory Perpetrator Programmes



Key Principles for Commissioning Perpetrator Services

Enhanced Safety and Freedom for Victims-Survivors

Part of a Coordinated Community Response

Interventions should hold perpetrators to account, whilst creating opportunities for change

The right intervention should be offered at the right time

Interventions should be delivered equitably with respect to protected characteristics

Staff delivering interventions should be skilled

Monitoring & Evaluation should improve practice and expand the knowledge base of

The Offer for People using Abusive Behaviours

Services for People using Abusive or Harmful Behaviours

Community Based Domestic Abuse Interventions for People Using Abusive Behaviours

Assessment of risk and need of those within the service and any known victims/survivors

Appropriate safety and care planning

Support for partners/ex-partners of those using abusive behaviours

Prevention and Awareness raising activity

A multiagency approach to risk management

Principles underpinning the contract

Trauma informed and trauma responsive

Gender responsive

Evidence based, high quality and focused on continuous improvement

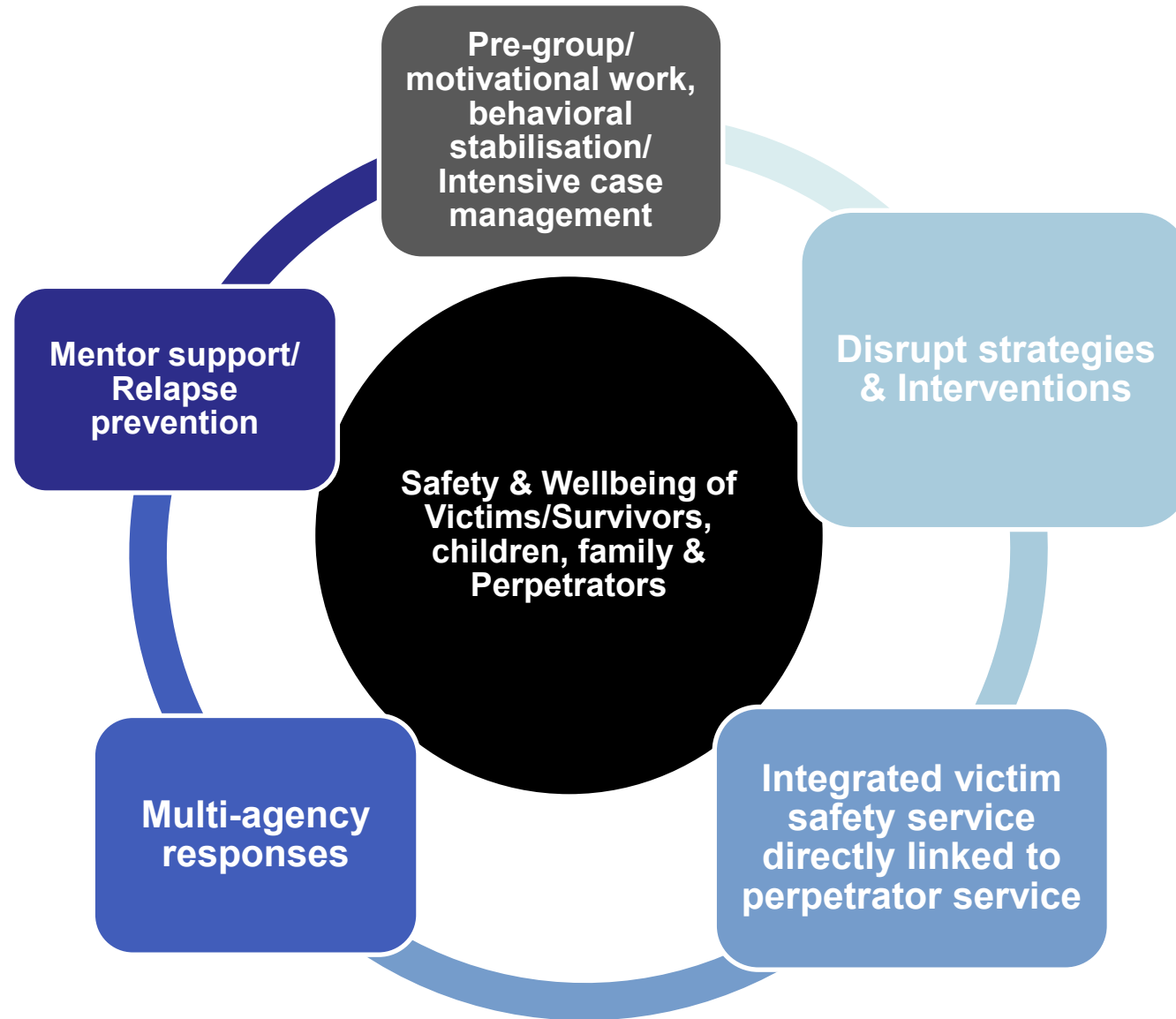
Inclusive and tailored to need

Shaped by people with lived experience

Part of a whole system approach, and Coordinated Community Response

Based on Respect and Dignity

Intervention



Contract Outcomes & Performance Measures

Increased identification of & specialist intervention to those using abusive behaviours

Reduction of repeat use of abusive behaviours

Increased safety and reduction of risk to victims-survivors

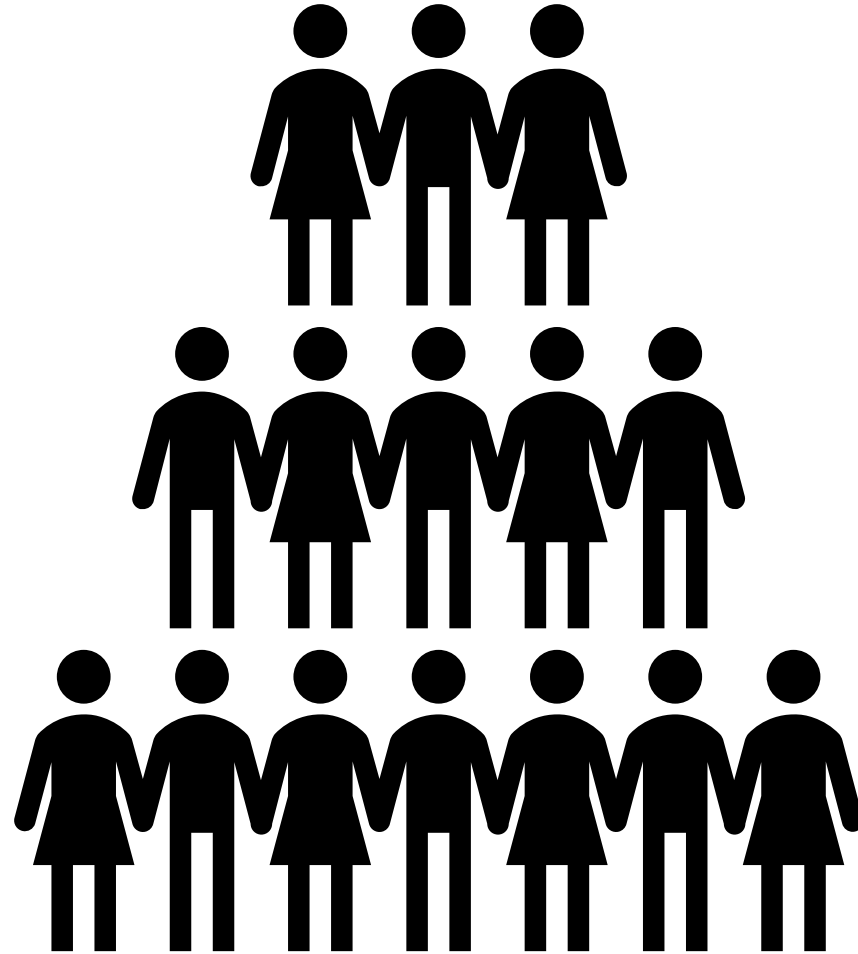
Improved health & wellbeing for people using abusive behaviours and victims-survivors

A multiagency response to those using abusive behaviours

The Hampton Trust



Demographics



Project Foundation

- Multi-agency response to repeat and serial perpetrators of DA
- Home Office funded pilot in 2 districts – now pan-Hampshire and IOW
- Evidence based model to support Police to identify who they should focus on out of the many high harm threats
- A ‘whole system’ approach undertaken by Police and Partners to reduce re-offending and encourage behavioural change
- VAWG National Framework requires use of “a process to identify risk which includes the assessment of behaviours known as high-risk indicators”.
- Analyse Police crime data – filters applied, across all risk levels, to identify a rolling monthly cohort for management by District Priority Crime Teams and partners.
- Foundation uses the academically researched and evaluated Priority Perpetrator Identification Tool (PPIT). A 10-point scale looking at recent and historic items, split into characteristics of offending and offender.
- Foundation Practitioner completes PPIT having reviewed a range of information sources. The use of a 3rd sector organisation with specialist knowledge and skills, is an innovative approach to identify risk and provides legitimacy (removal of partnership bias effected by resource/demand and experience) but requires the trust and confidence of all involved in the Risk Management Plan (RMP)
- RMP – four pillars - supervision, monitoring and control, interventions and treatment and victim safety.
- Aim - motivate to engage with specialist services to reduce risk aligned to the 7 pathways to prevent re-offending complemented by Police disruption and enforcement tactics

Questions

